



Newsletter of the Midwest Model Shipwrights ♦

www.midwestmodelshipwrights.com ♦

June, 2021

## • Scuttlebutt •



### The 2021 NRG Photographic Ship Model Competition

The Board of Directors of the Nautical Research Guild is pleased to announce the 2021 Photographic Ship Model Review & Juried Competition is open for entries. Please review the official rules carefully; there have been some changes and improvements since the last event, which was held in 2015. Most notably, all files will be submitted online...no more downloading files to a DVD or driving to the post office to mail them. Gold, Silver, and Bronze medals will be awarded for the First, Second and Third place models in three categories: Apprentice, Journeyman and Master. A Best of Show medal will be awarded to the best Gold medal winner, and ribbons will be presented to models with qualifying points.

The competition is open to Regular Members in good standing. If you are not currently a member, you can join the Guild for as low as \$40 and enter the Competition. Winners will be announced at the Annual Member's Meeting in the Fall. To view the complete rules and download the entry form, visit the NRG website at <https://thenrg.org/contests/rules>

The Model Review and Competition emphasizes craftsmanship and artistic expression as well as historic fidelity. As in the past, there will be multiple judges across all three entry categories. To underscore the broader educational value of their participation, every entrant will receive copies of their judge's scoring and commentary sheets for their model or models.

The participation cost is \$30 per entry, and the entry fee may be paid online through the NRG store. The Competition is only open to NRG members in good standing. Entrants whose membership lapses during the contest will be disqualified. Multiple entries are welcome, but they must be in the same category. NRG directors, officers and judges are not eligible to enter this event.

Entries must be received by August 2nd, 2021.

### MMS OFFICERS & STAFF



President - Bob Filipowski.....(847) 394-0757

Vice Pres. - Glenn Estrzy .....(847) 259-1574

Treasurer - Allen Siegel .....(847) 446-7248

Secretary - Bob Sykes.....(630) 766-6645

Club Photographers:

Leon Sirota .....(847) 541-6285

Bob Frysztak.....(630) 234-5684

Web Master - John Pocius...(630) 957-7298

[jpdesign@mindspring.com](mailto:jpdesign@mindspring.com)

## June Meeting Notice

### The *Egezia's* Plinth

By  
Rick Szydelko

Although not always adhered to by modelers, an unspoken rule when it comes to mounting your model is the fact that the plinth and pedestals should compliment the model in terms of period and ship type. Rick Szydelko has pulled out all the stops when it comes to designing the plinth for his ancient Egyptian vessel, the *Egezia*. Arguably, nothing like it has ever been presented to the membership. It's been said before, but this is definitely one presentation you don't want to miss!

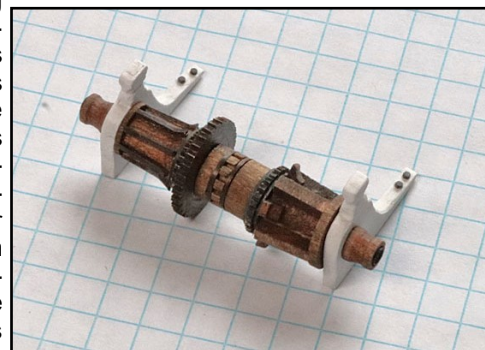


Proceedings will begin on Wednesday, June 16th, at 7:00 PM, but you will be able to log on as early as 6:30 PM. Be on the lookout for your Zoom invite, which will be sent to you by no later than June 15th. Hope you can join us!

## • A Scratch Built Windlass •

By  
Dave Kupczyk

Probably, the most important lesson that could be learned from Dave Kupczyk's presentation involved his approach when fabricating a complex component for his model. In this case, it was the windlass for his *Bluenose*. Composed of two different drums for handling chain and rope hawsers, this versatile machine was asymmetrical in appearance, which added to its complexity.



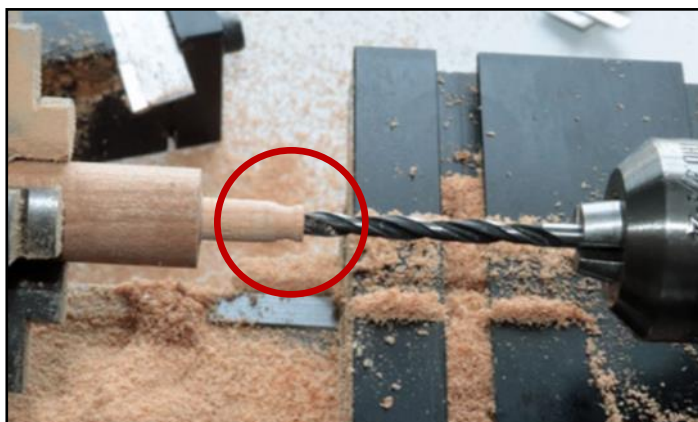
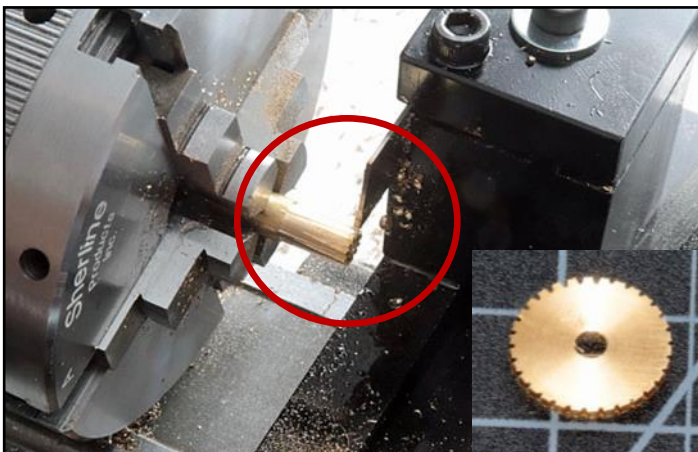
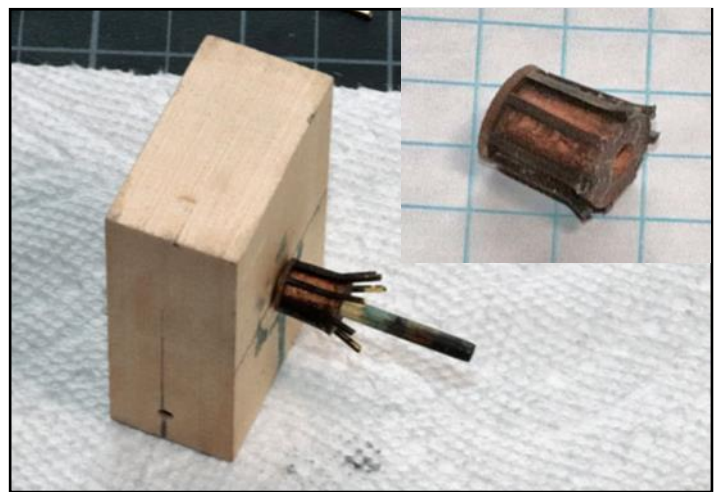
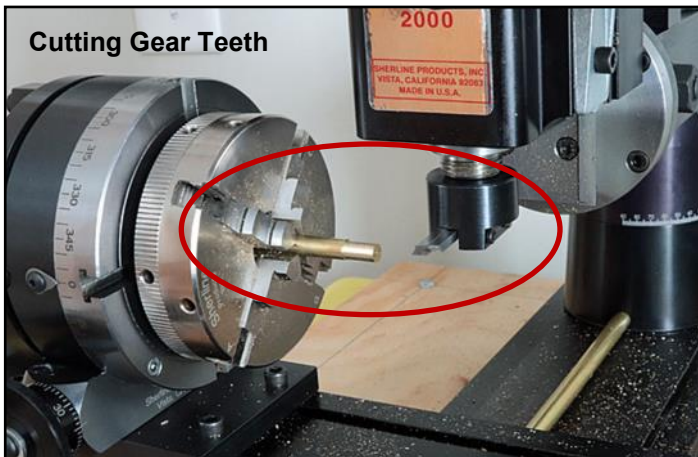
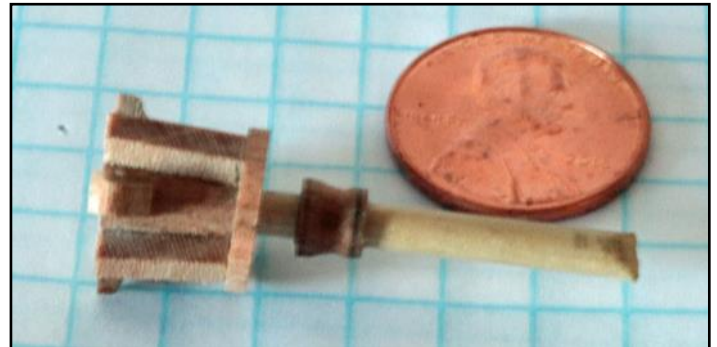
Making extensive use of a lathe and overhead mill, Dave made it look almost easy, especially when making the gears, spacers, pawl wheel, and bands. When completed, this detailed deck fitting was composed of 15 individual components. For additional photos, see page 2.



## • Ships on Deck •

### Components of a Scratch Built Windlass by Dave Kupczyk

Photos by Dave Kupczyk

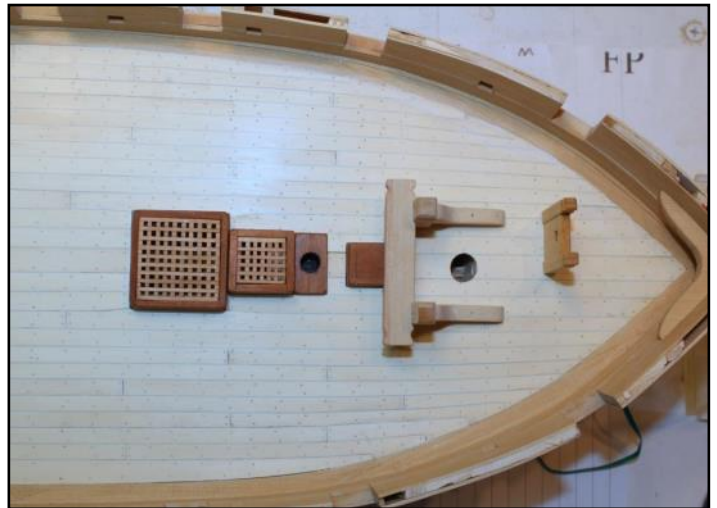
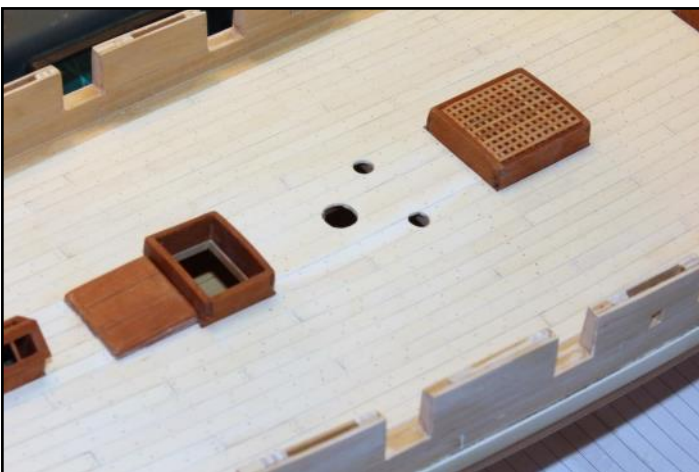
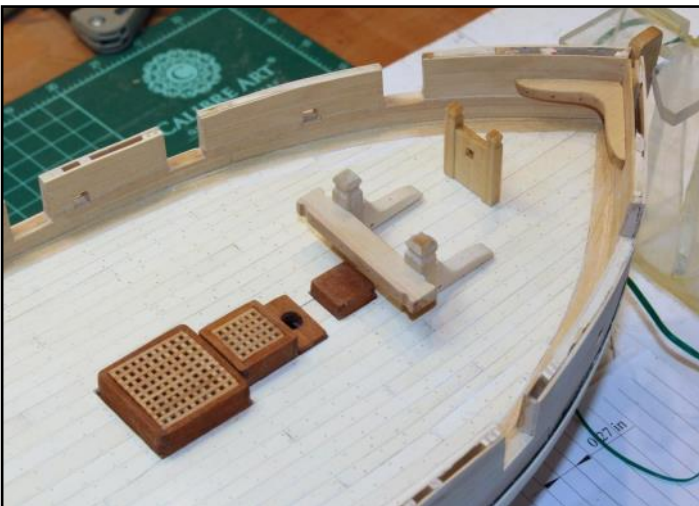
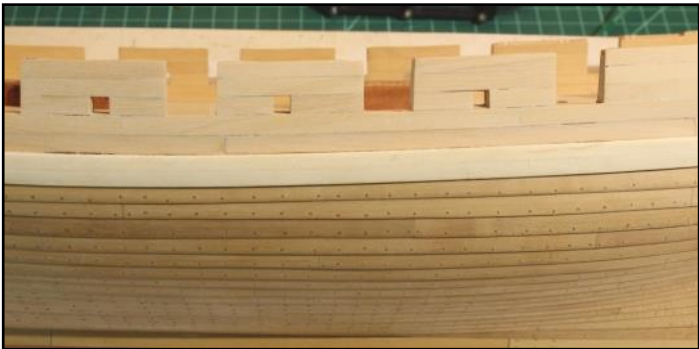




## ● Ships on Deck ●

### HMS *Swallow* by Toni Levine

Photos by Toni Levine





## ● Ships on Deck ●

Continued

### Rigs for small warships at the beginning of the 18<sup>th</sup> Century

Sketches and Text by Ian McLaughlan

The beginning of the 18<sup>th</sup> Century saw some changes in the sail plans of small warships. Three examples are shown here. First comes the *Peregrine Galley* of 1700, whose designer Peregrine Osbourne was master (Admiral) of the Royal Yachts and whose original intention may have been to see her rigged as a brigantine, with a square-rigged foremast and a fore and aft rigged main. She was very quickly altered to ship rig and became a fast sea-going taxi for the Duke of Marlborough between London and the Low Countries.

*Peregrine Galley* of 1700



*Peregrine Galley*  
Ship Rigged

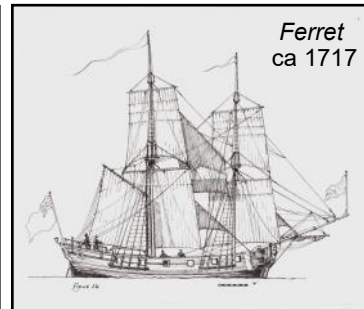


*Ferret* was a sloop of war, ordered in 1710 for police duties amongst England's Caribbean Islands and unusually was fitted with a single mast whereas most naval sloops had two. She was given a second mast in 1717 before being captured in Cadiz Bay by a Spanish two decker.

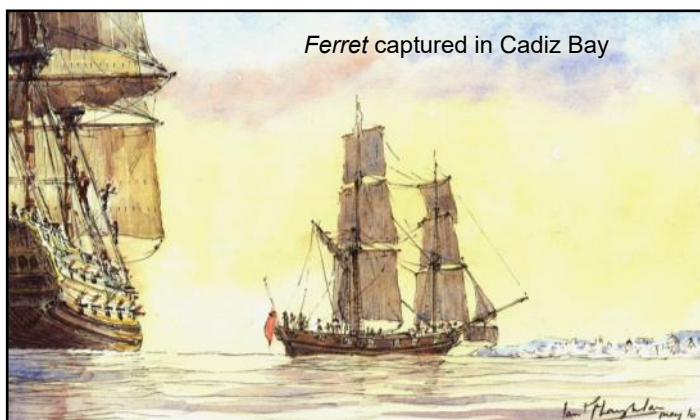
*Ferret*  
ca 1710



*Ferret*  
ca 1717

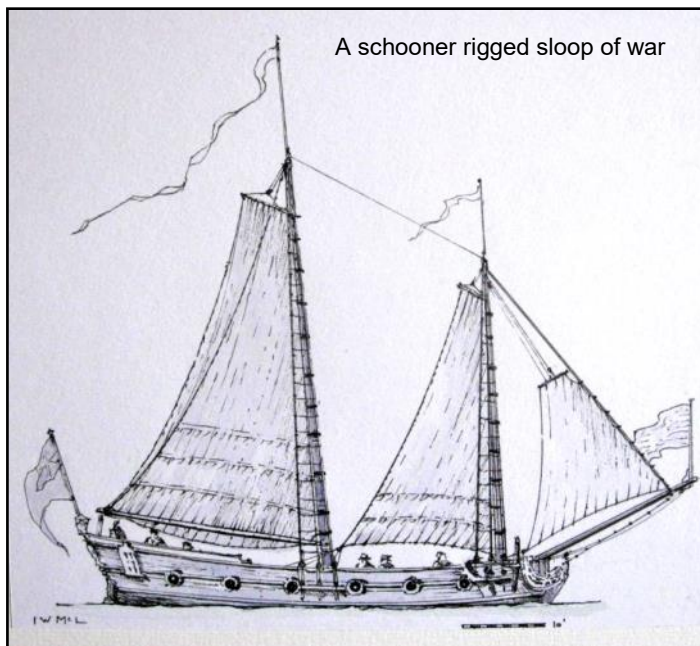


*Ferret* captured in Cadiz Bay



The last sketch is of what the Americans later christened the schooner rig. The rig, like so many clever rigs, originated in Holland and possibly they got it from the Western Pacific. It was certainly in use in English waters by 1700 though not necessarily by the Royal Navy, but it would have been a good rig for a sloop of war as the Americans were to prove towards the end of the 18<sup>th</sup> Century.

A schooner rigged sloop of war





## ● Ships on Deck ●

Continued

### US Brig *Syren* by Ray Kroschel

Photos by Ray Kroschel



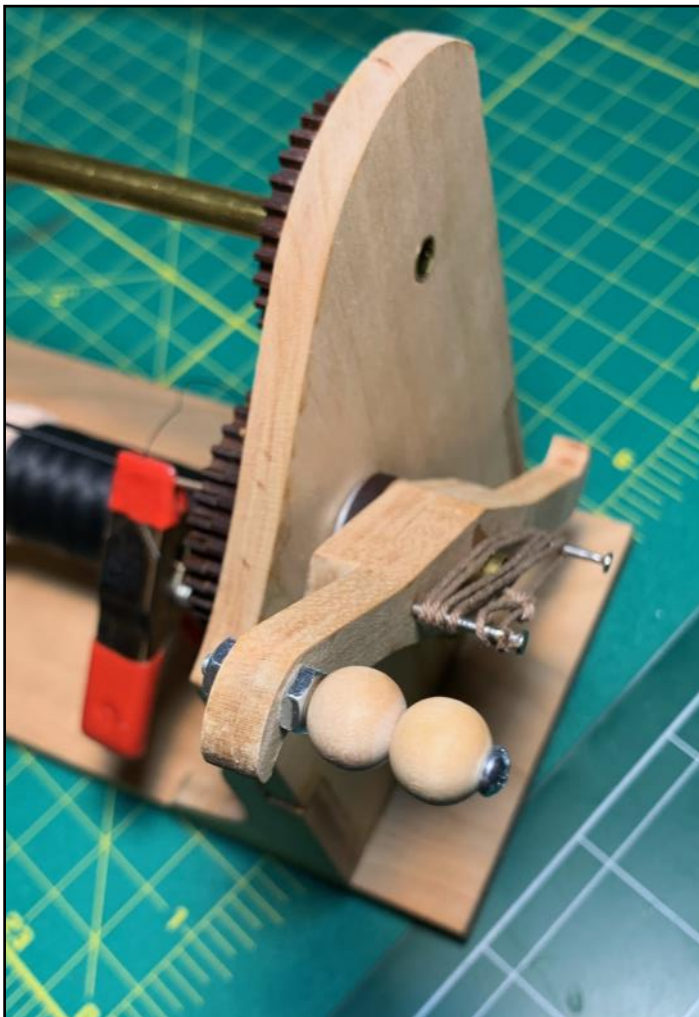
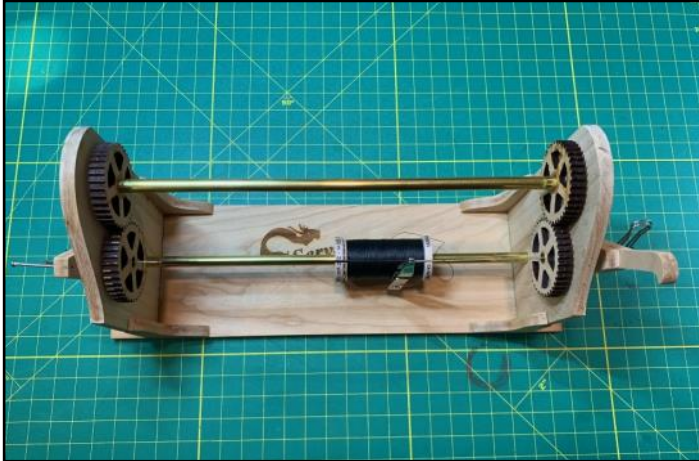
"Ships on Deck", continued on Page 6



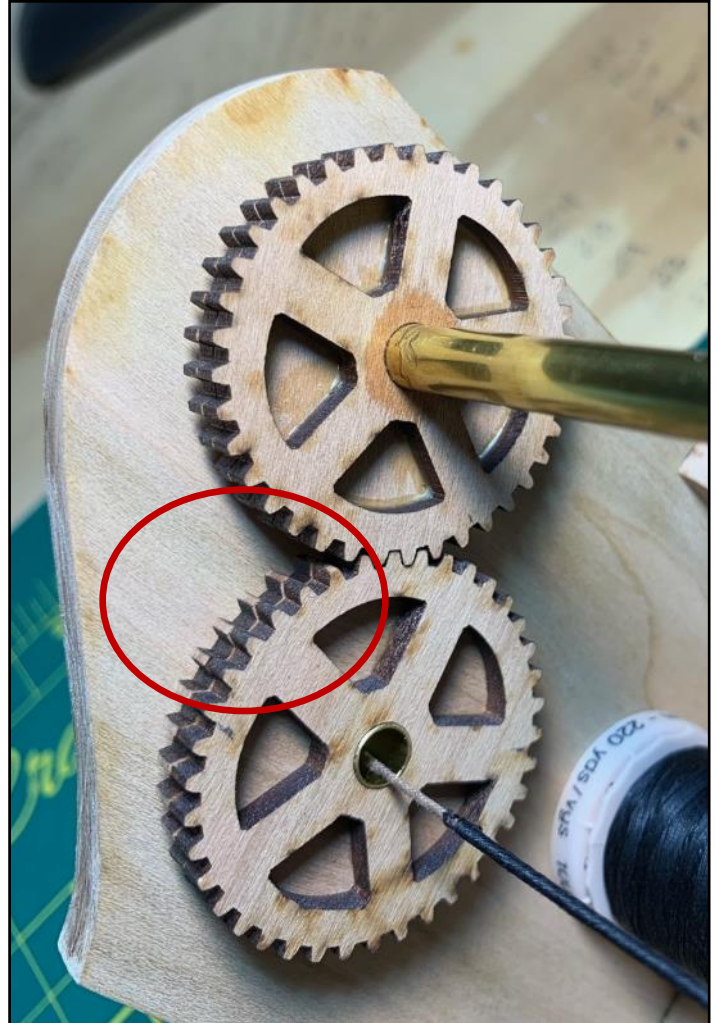
## ● Ships on Deck ●

Continued

### Improving the *Serv-O-Matic* Serving Machine by Patrick Sand



Adding a small handle to the right hand crank made it easier to operate the unit.



The gears had a tendency to bind up, and Patrick was forced to file down some teeth. You can see the slight misalignment on the lower gear, which, per the instructions, was glued with the grain at right angles. Those gears where Sand matched the grain pattern of both layers allowed the teeth to be more perfectly aligned, and seemed to improve performance.



"Ships on Deck", continued on Page 7



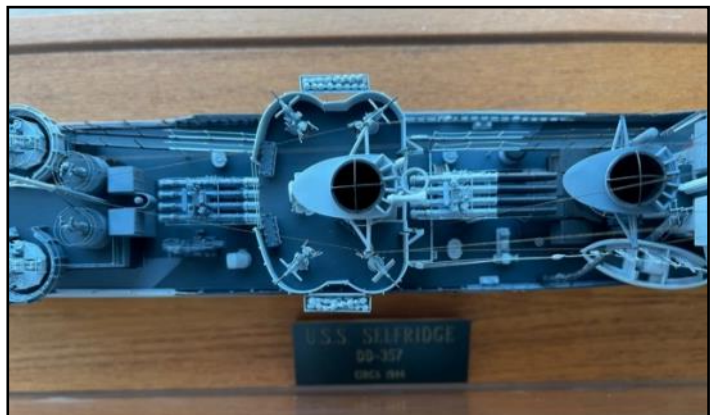
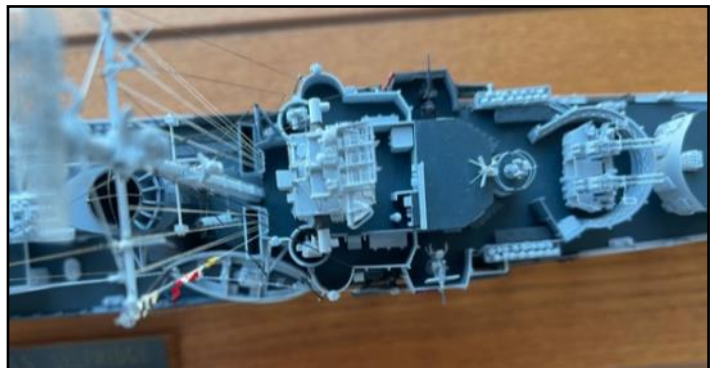
## ● Ships on Deck ●

Continued

### USS Selfridge DD357

Model by Don Preul, presented by Coleman Seskind

Photos by Coleman Seskind



"Ships on Deck", continued on Page 8



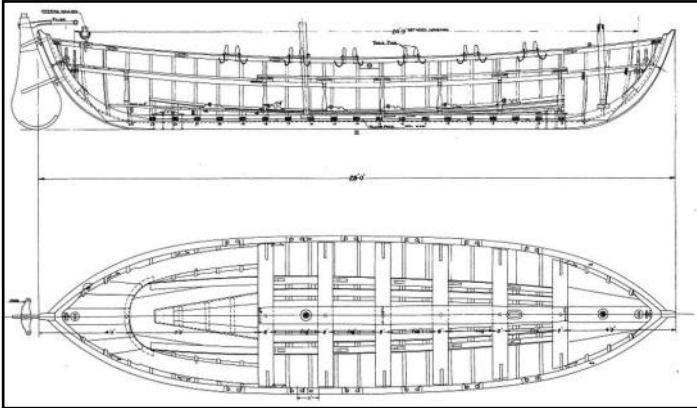
## ● Ships on Deck ●

Continued

### USS *Constitution* by Bob Fryszak

Photos by Bob Fryszak

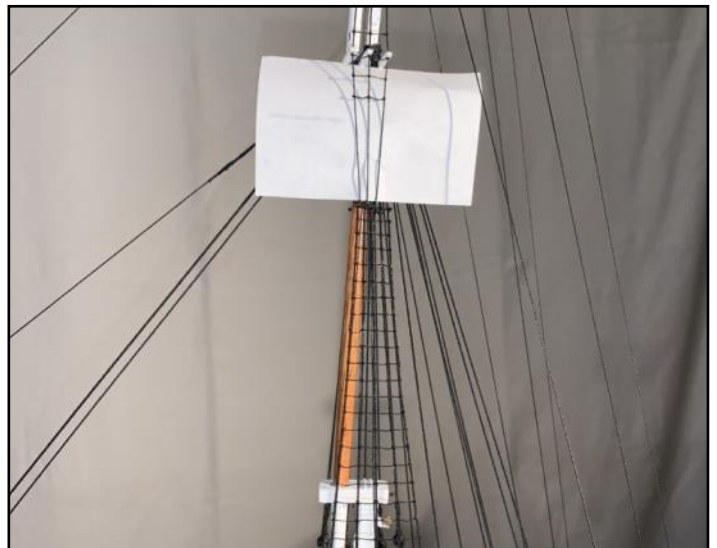
Bob decided to take a break from rigging and has built a "bread & butter" whaleboat for his USS *Constitution*. At 1/96th, a 28' whaleboat works out to 3.5". He was trying to model it after a photo of the actual boat on the ship. The model includes all the cleats, eyebolts, thole pins, oars, and mountings for the single mast.



**Upper Right Photo:** Bob decided to use the "wooden stick" approach for spacing the rat lines. It is simply two pieces of square stock the size of the ratline spacing ( $3/16" = 18"$ ), which are clamped in place as a guide.



Completed port lower ratlines on all three masts, including futtock shroud ratlines.



A piece of white paper helps to see the shrouds and knots.

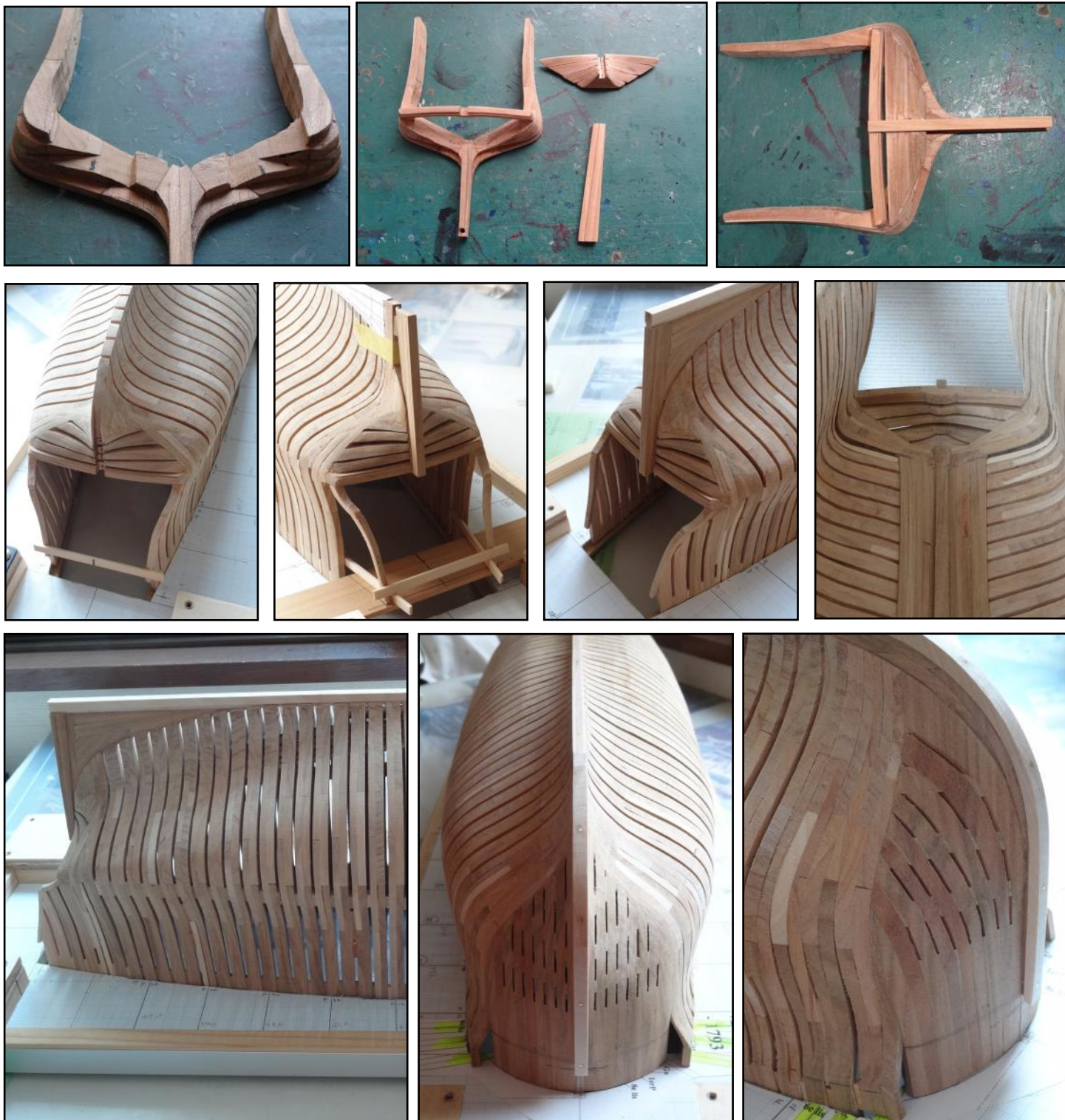


## ● Ships on Deck ●

### ***Le Hermione* by Mr. Norio Uriu**

Photos by Mr. Norio Uriu

This is the third update on *Le Hermione* from our friend, Mr. Norio Uriu, of the Rope in Tokyo, Japan. As stated in previous issues of the Report, this is his first attempt at such complex framing. Since the last update, the bow, stern and keel component were installed. The stern, particularly the transom, was especially challenging. It took three tries before Mr. Uriu was satisfied with the final shape.



"Ships on Deck", continued on Page 10

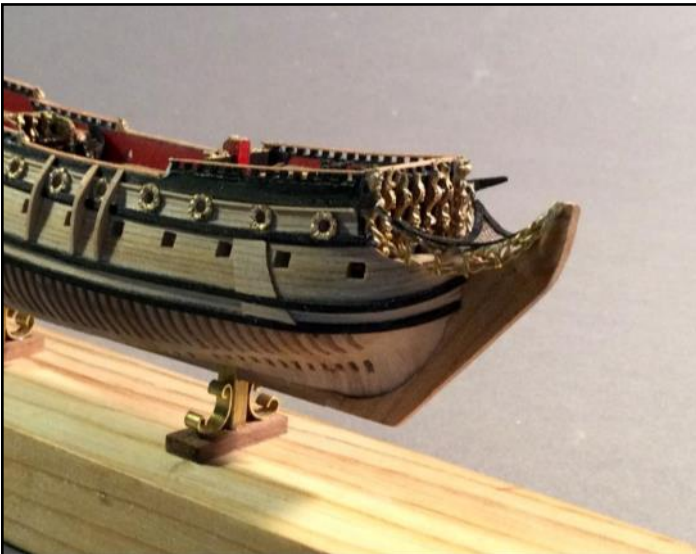


## • Ships on Deck •

Continued

### **Resolution 1:384** by Gus Agustin

Photos by Gus Agustin



## • MMS ANTI-PIRACY POLICY •



Here is a list of banned companies that have been pirating and duplicating kits, books, and plans from reputable manufacturers. Quite often these disreputable companies offer their products at what appear to be reasonable prices, but these items are often poor in quality. Many of them do not have websites. They market their

illegal products via the Internet on sites such as eBay.

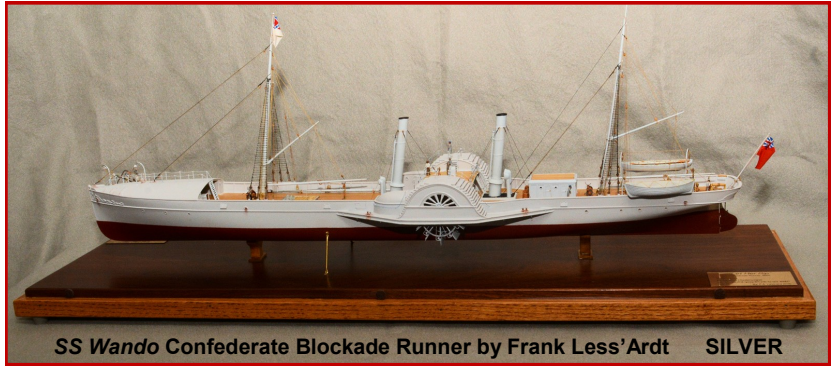
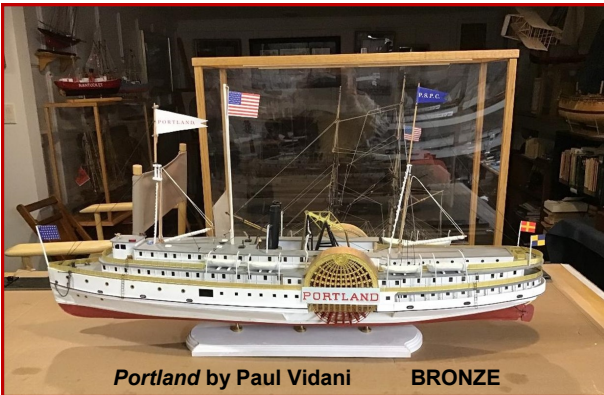
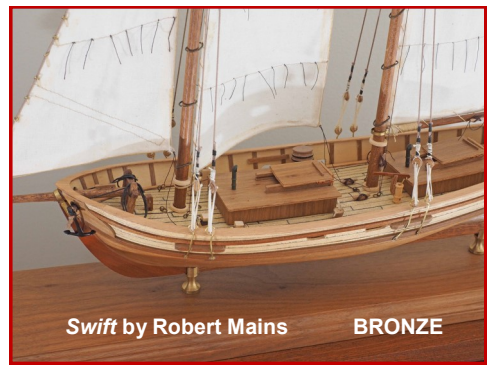
If you are contemplating your next project, please check this list. If you are not sure, discuss it with Kurt Van Dahm before you commit to a purchase. For easy reference, this information will appear in all future issues of the *Forecastle Report*.

**Please note that CAF has been removed from this list.**

ZHL	WN
RealTS	Unicorn Model
Snail Model	YQ (YaunQing)
XinFeng	Master
JD Model	CN
LHQQ	CF
Shi Cheng	Shi hai
Woodenkit (Russian MFG)	4H Model
YengFan	SC
Moxing	DUJIAOSHOU



**Models of the 44th Annual Wisconsin Maritime Museum Model Ships & Boats Contest**





**Models of the 44th Annual Wisconsin Maritime Museum Model Ships & Boats Contest**  
Continued



**Gon Waki III  
by Bill French  
GOLD**



**The Fred Weiss Quadruple Racing Shell  
by Richard Stehlik  
GOLD**



**SS Willapa by Nicholas Dumbrowski  
GOLD**



**Single Racing Shell  
by Richard Stehlik  
GOLD**



**HMS Sussex (1:384)  
by  
Gus Agustin  
GOLD**



**US Brig Syren  
by David Saarinen  
GOLD**



**Italian Heavy Cruiser Zara by Chuck Bauer  
GOLD**



**Peterboro Canoe by Samuel Parent  
GOLD**



**Continental Galley Washington by Kevin Hudson**

**GOLD**



**Armed Virginia Sloop  
by  
Bill Sproul  
GOLD**



## The Forecastle Report, June, 2021 - P.13

### **Models of the 44th Annual Wisconsin Maritime Museum Model Ships & Boats Contest** Continued



HM Cutter Lady Nelson  
by  
Tim Morrison  
GOLD



Benjamin W. Latham by Daniel Pacholski GOLD



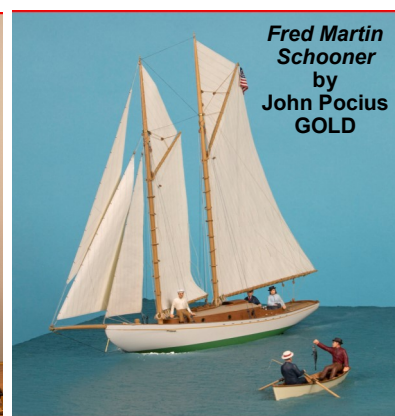
Skiff by Dan Cicero GOLD



La Belle by Bill Sproul GOLD



Pamelia  
by  
Kevin Hudson  
GOLD



Fred Martin  
Schooner  
by  
John Pocius  
GOLD



Pirate & Rinky Dink by John Pocius

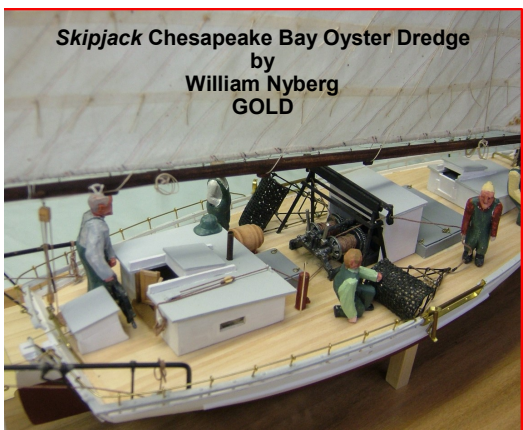
GOLD



Yenikapi Steam Tugboat by Enis Koral  
GOLD



Seguin Steam Tug by Gregg Zurek GOLD



Skipjack Chesapeake Bay Oyster Dredge  
by  
William Nyberg  
GOLD



Varyag Russian Missile Cruiser  
by  
Chuck Bauer  
GOLD